

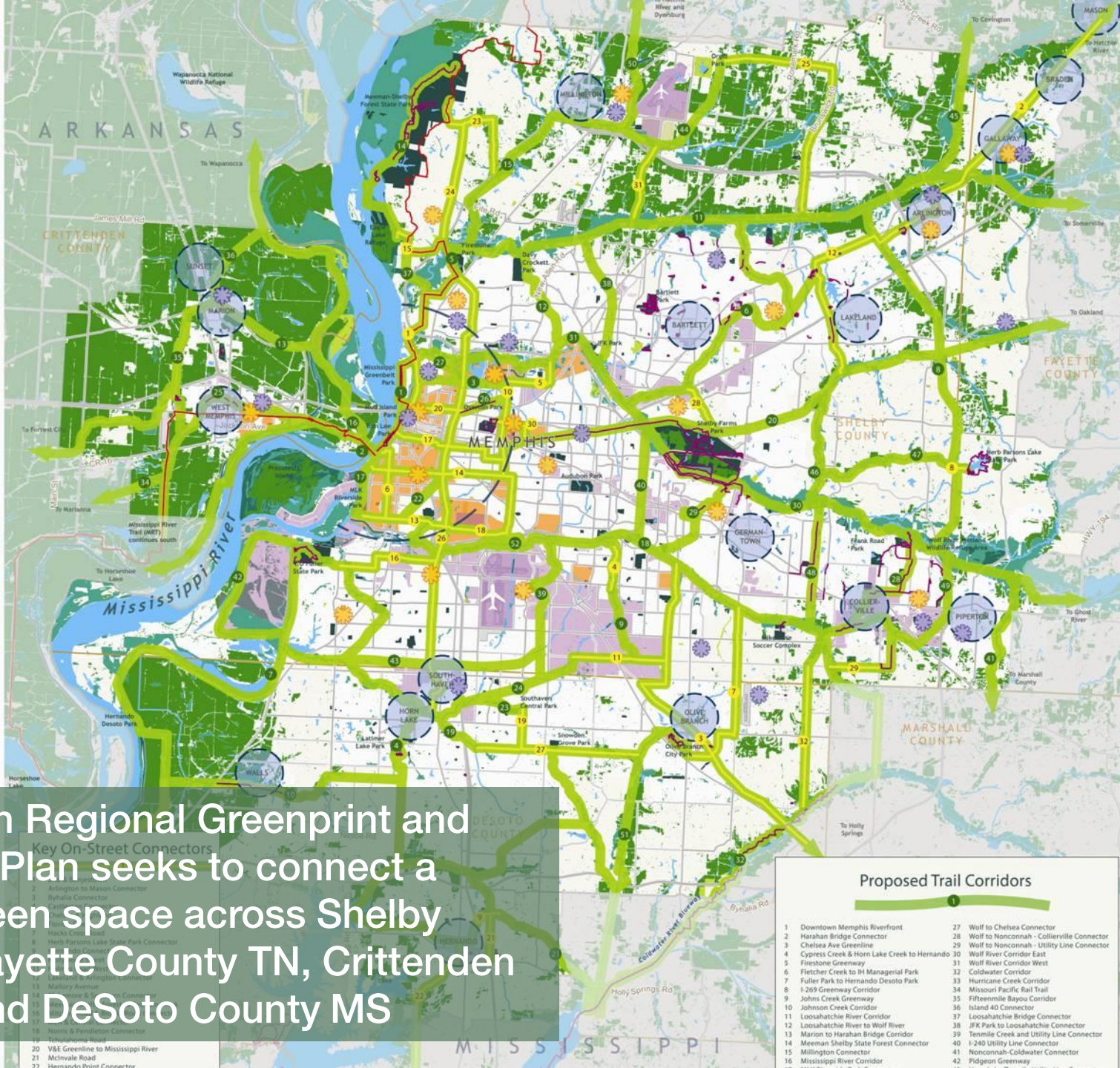
RESILIENT

SHELBY



GREENPRINT *for Resilience*

www.resilientshelby.com



The Mid-South Regional Greenprint and Sustainability Plan seeks to connect a network of green space across Shelby County TN, Fayette County TN, Crittenden County AR, and DeSoto County MS

Key On-Street Connectors

- 1 Millington to Mason Connector
- 2 Byhalia Connector
- 3 East Memphis Connector
- 4 Hacks Creek Connector
- 5 Herb Parsons Lake State Park Connector
- 6 Hernando Desoto Park Connector
- 7 Millington to Nonconah Connector
- 8 Millington to Nonconah Connector
- 9 Millington to Nonconah Connector
- 10 Millington to Nonconah Connector
- 11 Millington to Nonconah Connector
- 12 Millington to Nonconah Connector
- 13 Millington to Nonconah Connector
- 14 Millington to Nonconah Connector
- 15 Millington to Nonconah Connector
- 16 Millington to Nonconah Connector
- 17 Millington to Nonconah Connector
- 18 Millington to Nonconah Connector
- 19 Millington to Nonconah Connector
- 20 V&E Greenline to Mississippi River
- 21 McInvale Road
- 22 Hernando Point Connector

Proposed Trail Corridors

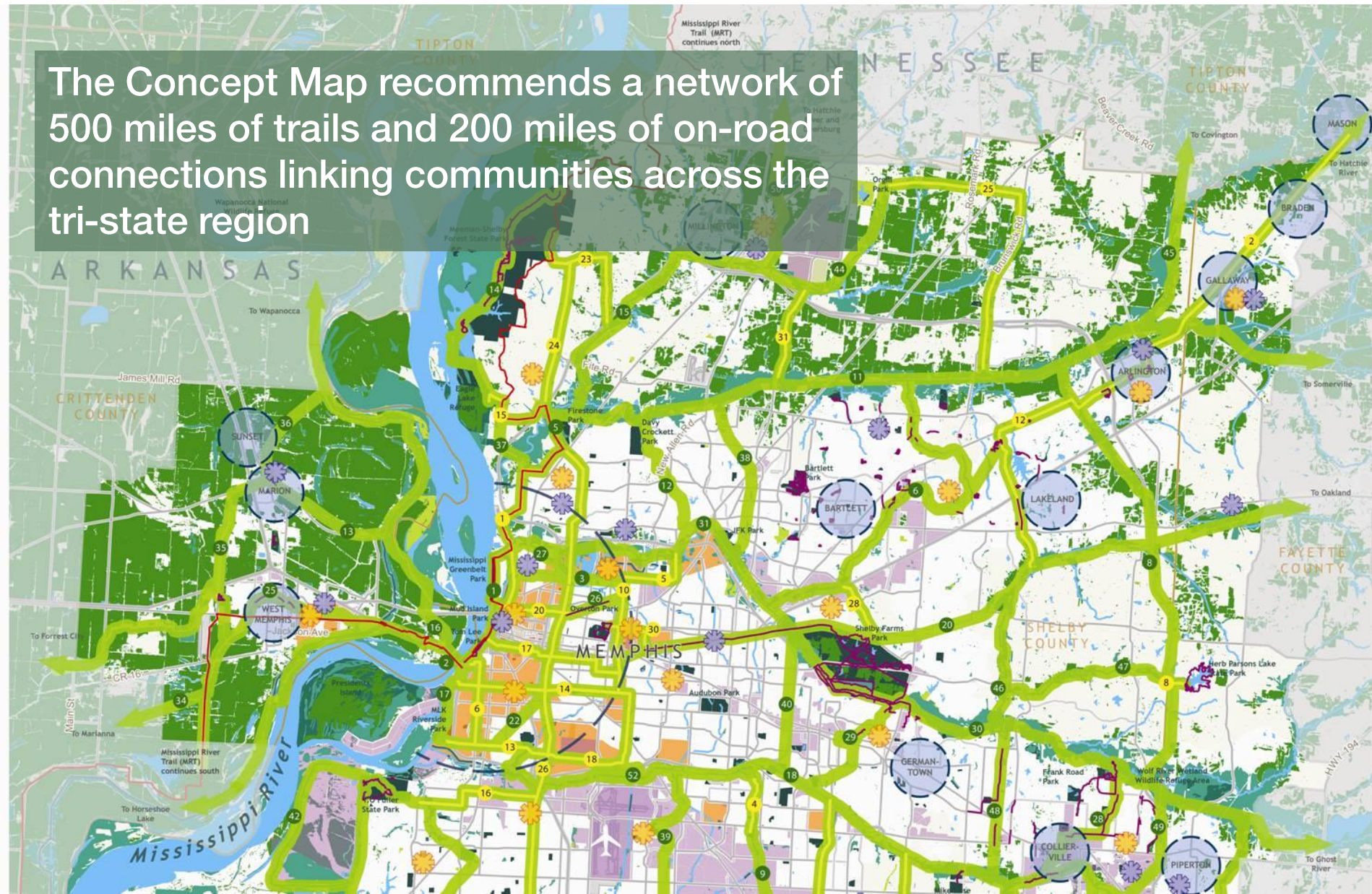
- 1 Downtown Memphis Riverfront
- 2 Harahan Bridge Connector
- 3 Chelsea Ave Greenline
- 4 Cypress Creek & Horn Lake Creek to Hernando
- 5 Firestone Greenway
- 6 Fletcher Creek to St Managerial Park
- 7 Fuller Park to Hernando Desoto Park
- 8 I-269 Greenway Corridor
- 9 Johns Creek Greenway
- 10 Johnson Creek Corridor
- 11 Loosahatchie River Corridor
- 12 Loosahatchie River to Wolf River
- 13 Marion to Harahan Bridge Connector
- 14 Meeman Shelby State Forest Connector
- 15 Millington Connector
- 16 Mississippi River Corridor
- 17 Wolf to Chelsea Connector
- 18 Wolf to Nonconah - Collierville Connector
- 19 Wolf to Nonconah - Utility Line Connector
- 20 Wolf River Corridor East
- 21 Wolf River Corridor West
- 22 Coldwater Corridor
- 23 Hurricane Creek Corridor
- 24 Missouri Pacific Rail Trail
- 25 Fifteenmile Bayou Corridor
- 26 Island 40 Connector
- 27 Loosahatchie Bridge Connector
- 28 JFK Park to Loosahatchie Connector
- 29 Tenmile Creek and Utility Line Connector
- 30 I-240 Utility Line Connector
- 31 Nonconah-Coldwater Connector
- 32 Pidgeon Greenway



MID-SOUTH REGIONAL GREENPRINT CONCEPT MAP

Concept for a Regional Network of Connected Green Infrastructure

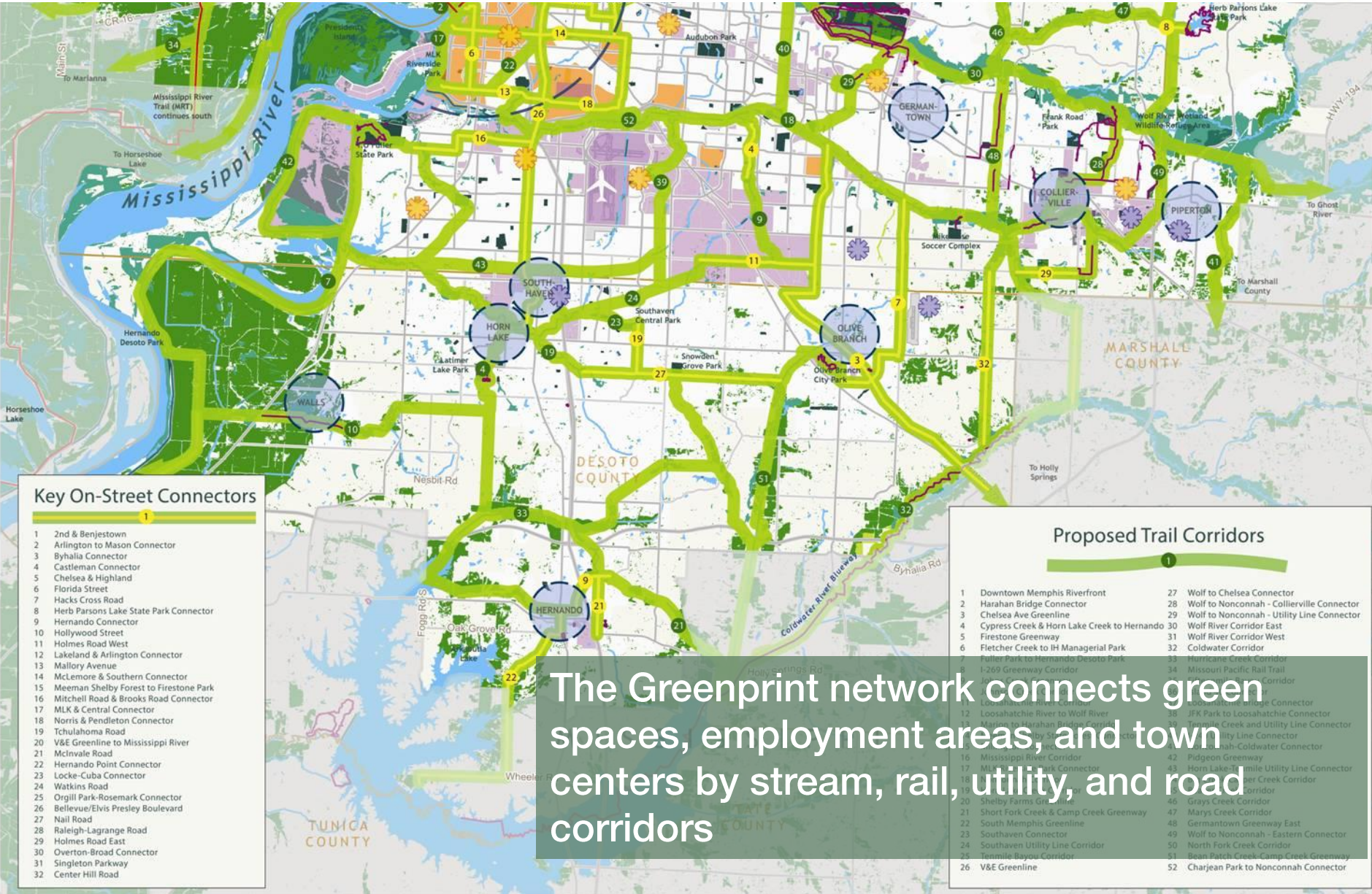
The Concept Map recommends a network of 500 miles of trails and 200 miles of on-road connections linking communities across the tri-state region





MID-SOUTH REGIONAL GREENPRINT CONCEPT MAP

Concept for a Regional Network of Connected Green Infrastructure



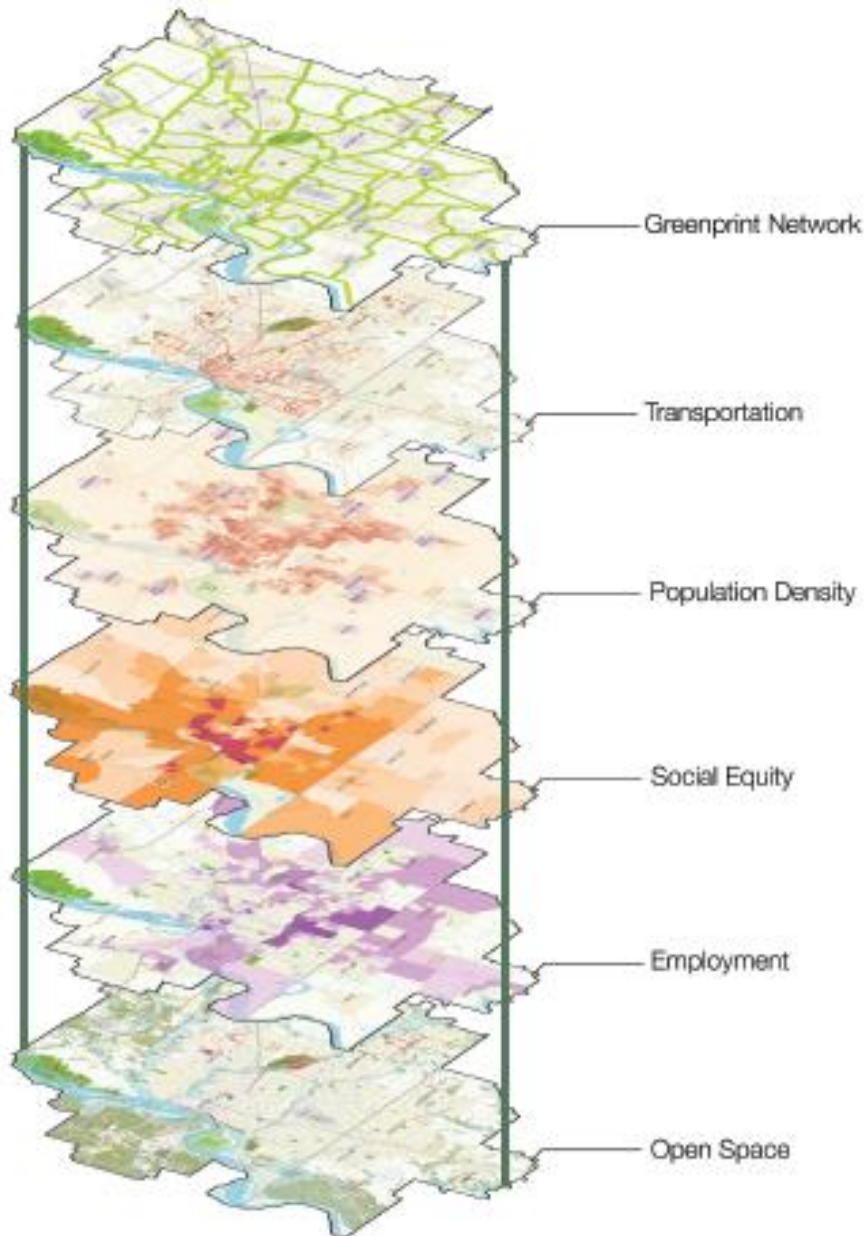
Key On-Street Connectors

- 1 2nd & Benjestown
- 2 Arlington to Mason Connector
- 3 Byhalia Connector
- 4 Castleman Connector
- 5 Chelsea & Highland
- 6 Florida Street
- 7 Hacks Cross Road
- 8 Herb Parsons Lake State Park Connector
- 9 Hermando Connector
- 10 Hollywood Street
- 11 Holmes Road West
- 12 Lakeland & Arlington Connector
- 13 Mallory Avenue
- 14 McMlore & Southern Connector
- 15 Meeman Shelby Forest to Firestone Park
- 16 Mitchell Road & Brooks Road Connector
- 17 MLK & Central Connector
- 18 Norris & Pendleton Connector
- 19 Tchulahoma Road
- 20 V&E Greenline to Mississippi River
- 21 McInvale Road
- 22 Hernando Point Connector
- 23 Locke-Cuba Connector
- 24 Watkins Road
- 25 Orgill Park-Rosemark Connector
- 26 Bellevue/Elvis Presley Boulevard
- 27 Nail Road
- 28 Raleigh-Lagrange Road
- 29 Holmes Road East
- 30 Overton-Broad Connector
- 31 Singleton Parkway
- 32 Center Hill Road

Proposed Trail Corridors

- 1 Downtown Memphis Riverfront
- 2 Harahan Bridge Connector
- 3 Chelsea Ave Greenline
- 4 Cypress Creek & Horn Lake Creek to Hernando
- 5 Firestone Greenway
- 6 Fletcher Creek to IH Managerial Park
- 7 Fuller Park to Hernando Desoto Park
- 8 I-269 Greenway Corridor
- 9 Loosahatchie River to Wolf River
- 10 Loosahatchie River to Wolf River
- 11 Loosahatchie River to Wolf River
- 12 Loosahatchie River to Wolf River
- 13 Loosahatchie River to Wolf River
- 14 Loosahatchie River to Wolf River
- 15 Loosahatchie River to Wolf River
- 16 Mississippi River Corridor
- 17 MLK Riverside Park Connector
- 18 MLK Riverside Park Connector
- 19 Shelby Farms Greenline
- 20 Shelby Farms Greenline
- 21 Short Fork Creek & Camp Creek Greenway
- 22 South Memphis Greenline
- 23 Southaven Connector
- 24 Southaven Utility Line Corridor
- 25 Tennessee Bayou Corridor
- 26 V&E Greenline
- 27 Wolf to Chelsea Connector
- 28 Wolf to Nonconnah - Collierville Connector
- 29 Wolf to Nonconnah - Utility Line Connector
- 30 Wolf River Corridor East
- 31 Wolf River Corridor West
- 32 Coldwater Corridor
- 33 Hurricane Creek Corridor
- 34 Missouri Pacific Rail Trail
- 35 Missouri Pacific Rail Trail
- 36 Missouri Pacific Rail Trail
- 37 Missouri Pacific Rail Trail
- 38 Missouri Pacific Rail Trail
- 39 Tennessee Creek and Utility Line Connector
- 40 Tennessee Creek and Utility Line Connector
- 41 Tennessee Creek and Utility Line Connector
- 42 Pigeon Greenway
- 43 Horn Lake-Tennessee Utility Line Connector
- 44 Horn Lake-Tennessee Utility Line Connector
- 45 Horn Lake-Tennessee Utility Line Connector
- 46 Grays Creek Corridor
- 47 Marys Creek Corridor
- 48 Germantown Greenway East
- 49 Wolf to Nonconnah - Eastern Connector
- 50 North Fork Creek Corridor
- 51 Bean Patch Creek-Camp Creek Greenway
- 52 Charjean Park to Nonconnah Connector

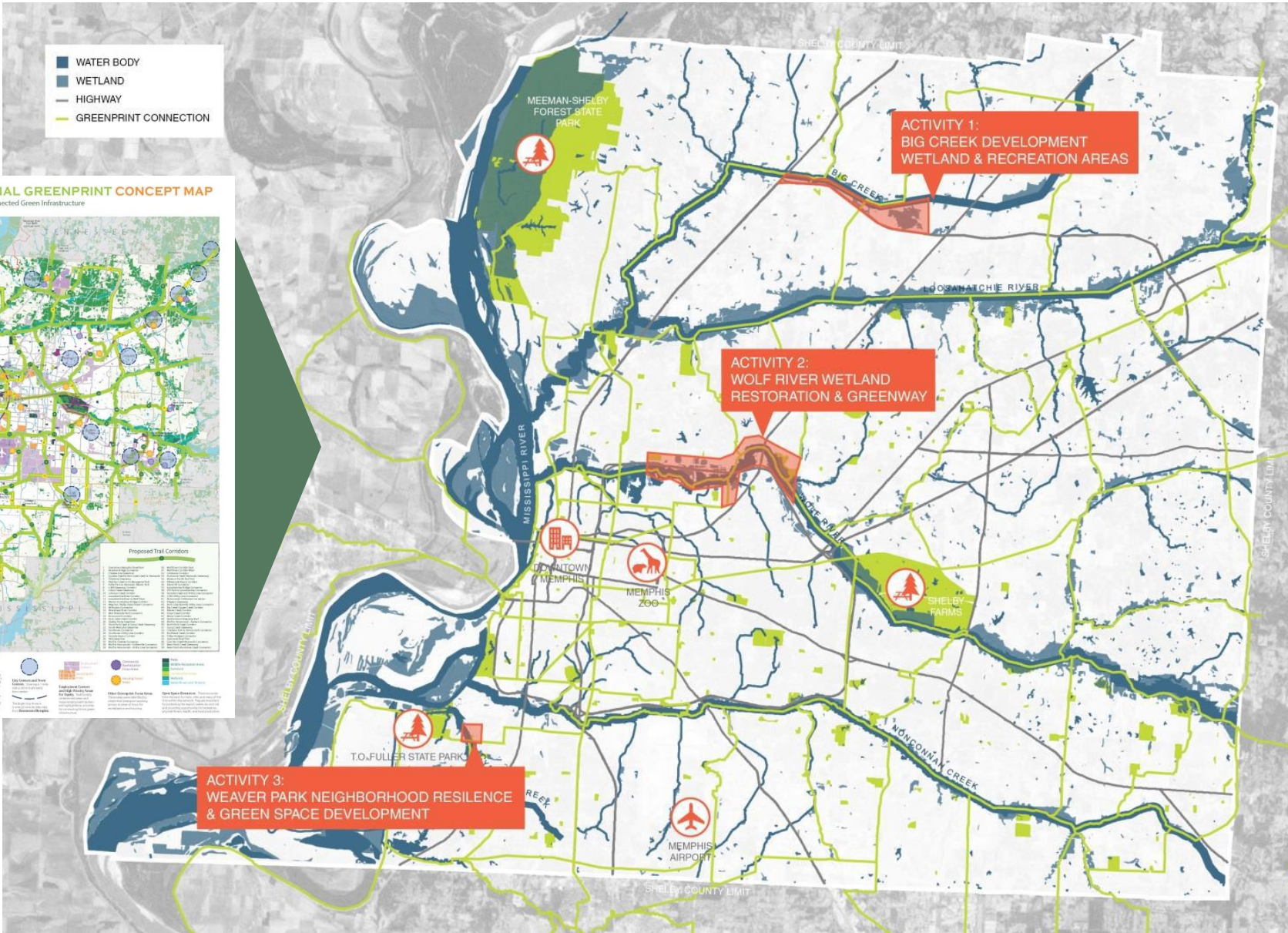
The Greenprint network connects green spaces, employment areas, and town centers by stream, rail, utility, and road corridors



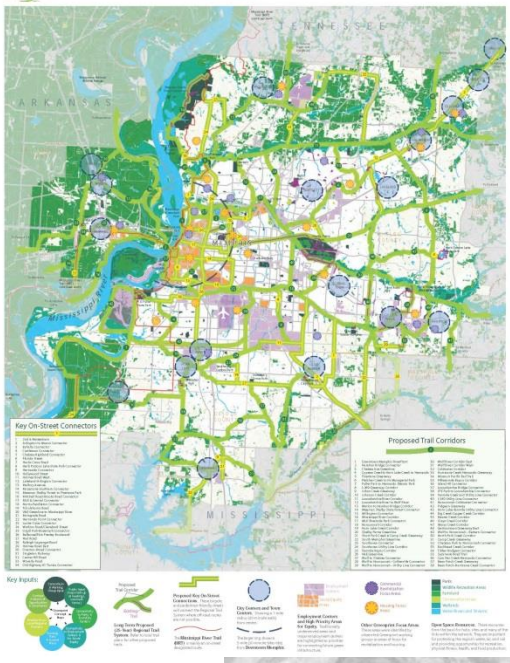
- » The Concept Map recommends a network of 500 miles of trails and 200 miles of on-road connections linking communities across the tri-state region
- » The Greenprint network was designed to connect and balance population, employment, equity, transportation, and green space
- » If implemented today, 78% of the region's population would live within 1 mile of a Greenprint corridor
- » And 79% of the region's jobs would be within 1 mile of a Greenprint corridor

Strategic Directions

-  A Regional Interconnected Network of Parks, Greenways and Open Spaces
-  Equitable Participation and Community Ownership
-  Enhanced Access through Transportation Choices
-  Healthy and Safe Communities
-  Improved Neighborhoods and Fair Housing Choices
-  Sustainable Resources and a Quality Environment
-  A Productive Workforce and Economy
-  Effective Long-term Regional Planning



MID-SOUTH REGIONAL GREENPRINT CONCEPT MAP
 Concept for a Regional Network of Connected Green Infrastructure



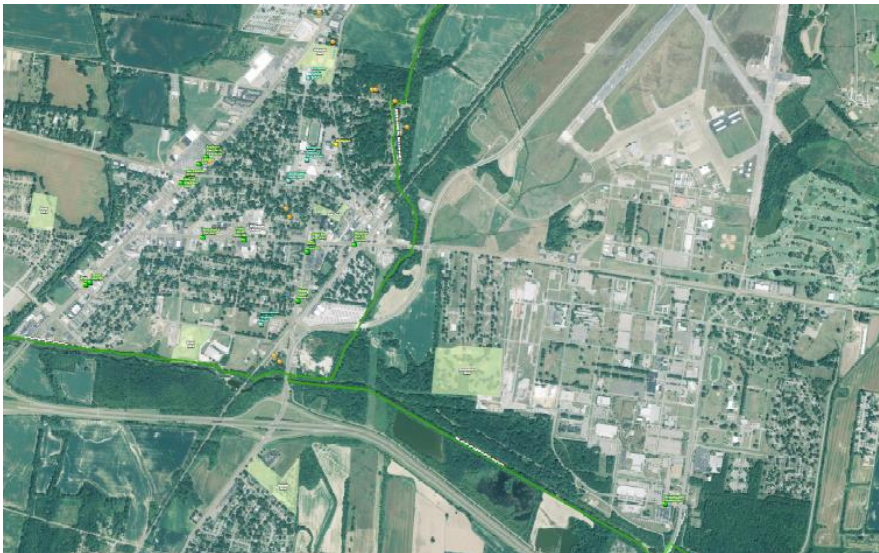
Awarded \$60,445,163

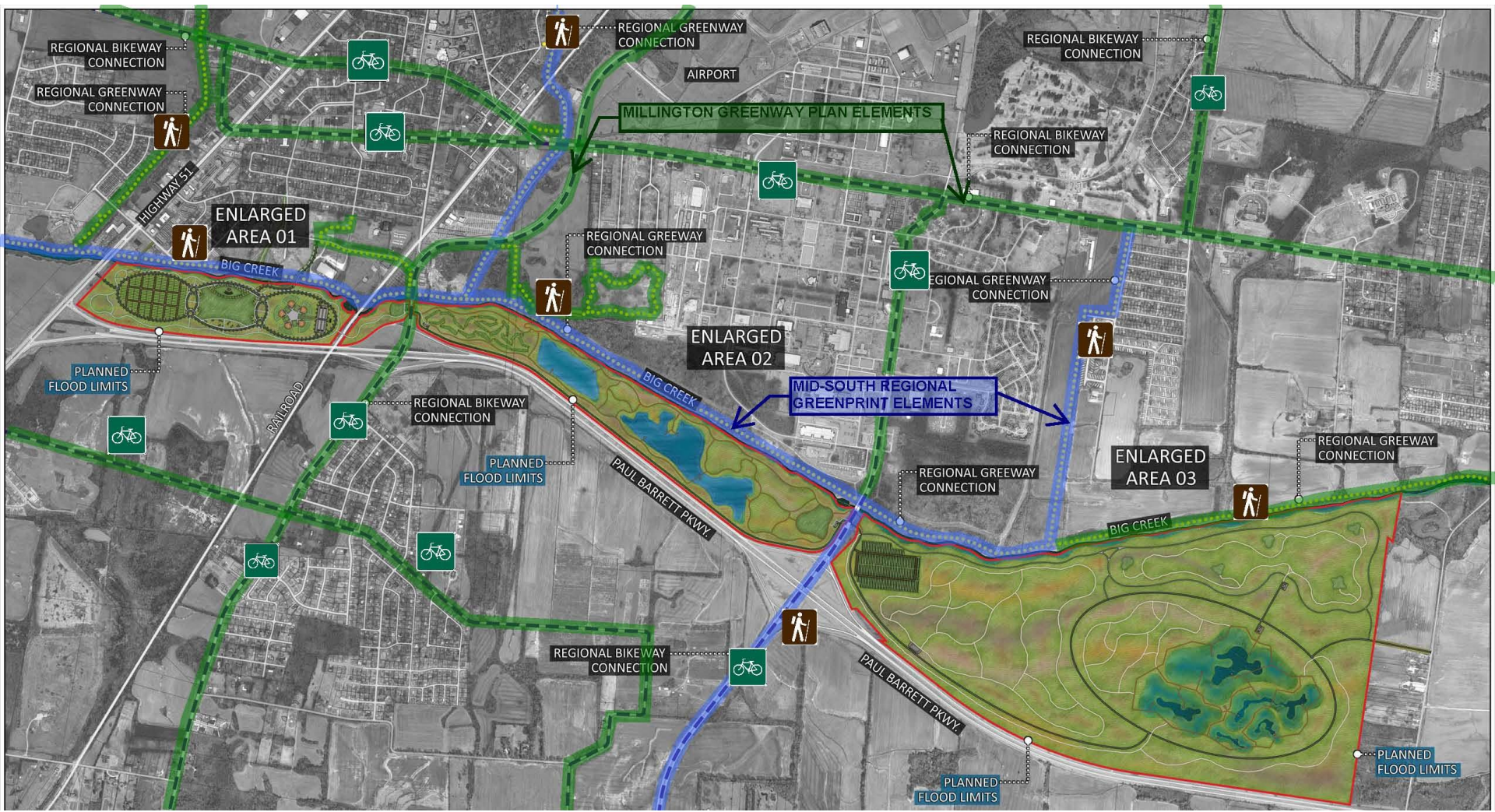
Leverage: \$35,600,000

Activity 1: Big Creek

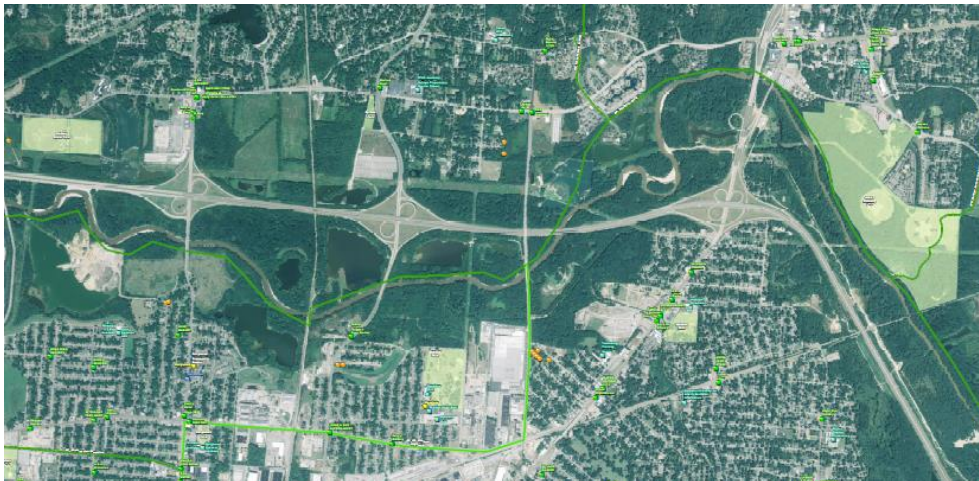


- Re-establishment of wetlands and other flood storage to accommodate water flow
- Better protection for nearby LMI homes and Naval Operations
- Creation of multi-purpose trails and greenspace
- Local food production





Activity 2: Wolf River



- Re-establishment of wetlands and other flood storage to accommodate water flow
- Better protection for nearby and downstream LMI homes
- Contribute to Wolf River Greenway
- Add new park amenities at Rodney Baber Park (Frayser) and Kennedy Park (Raleigh)
- Green street on Orchi, bike lanes on Highland

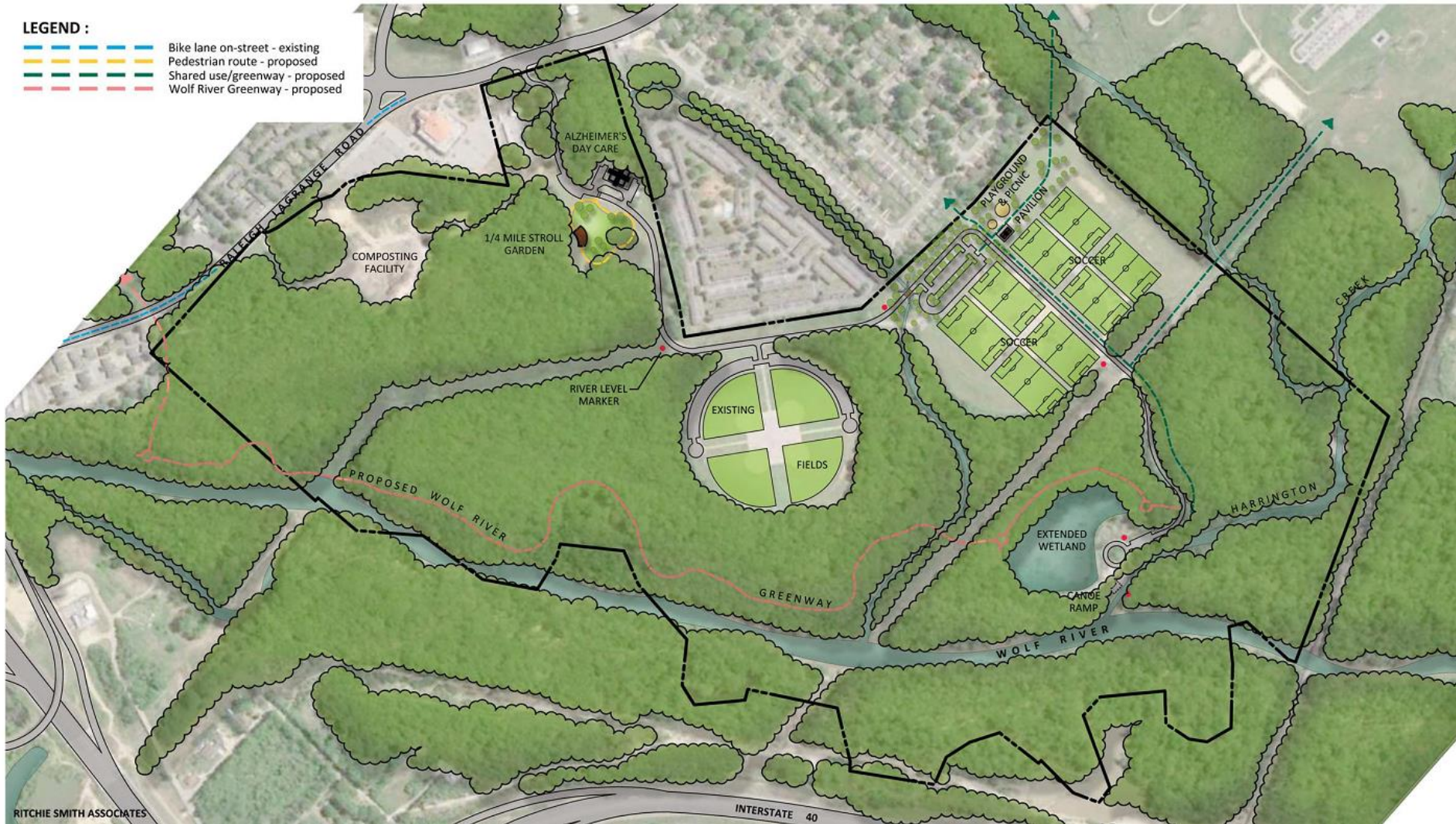
LEGEND :

-  Bike route on-street - existing
-  Bike lane on-street - planned
-  Pedestrian route - proposed
-  Shared use/greenway - proposed

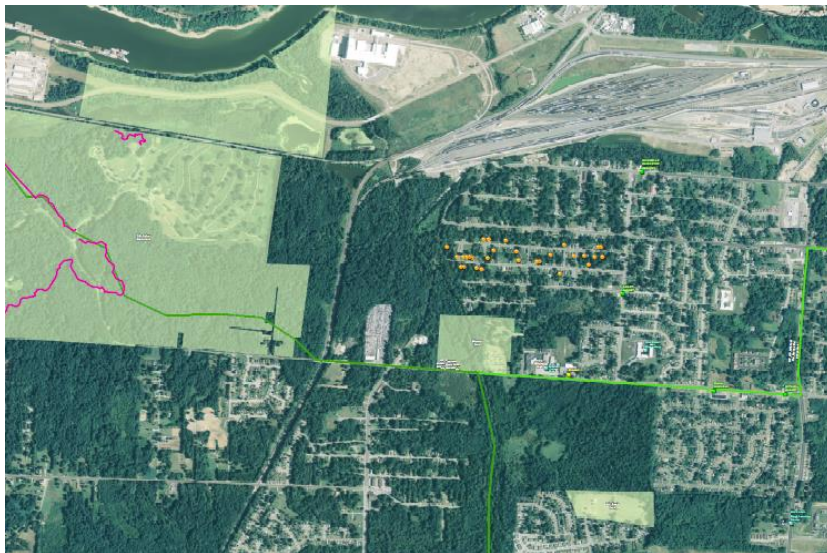


LEGEND :

-  Bike lane on-street - existing
-  Pedestrian route - proposed
-  Shared use/greenway - proposed
-  Wolf River Greenway - proposed



Activity 3: South Cypress Creek



- Buyout of existing homes and replace with greenspace, wetlands, and other flood storage to accommodate water flow
- Better protection for nearby LMI homes
- Create affordable infill or rehabilitation nearby for displaced residents
- Creation of multi-purpose trails
- Local food production
- Development of vacant lot program



- OCCUPIED PROPERTY BUY OUTS
- VACANT PROPERTY BUYOUTS
- WETLANDS
- UPLAND BMP'S
- LEVEE/BERM
- EXISTING STREAM
- EXISTING 100-YEAR FLOODPLAIN
- NEW STREAM IMPROVEMENTS
- NEW 100-YEAR FLOODPLAIN



- BUY-OUT BUILDING
- HOME LOT BUILDING

Activity 4: Resilience Plan



- Many other areas of county and region were hard hit in 2011 or by other floods
- NDRC requirement of addressing unmet need limits where we address
- Community-driven process to identify future resilience projects
- A regional resilience plan process continues momentum that will follow award announcement

John Zeanah, AICP
901 576 7167
john.zeanah@memphistn.gov



GREENPRINT *for Resilience*

www.resilientshelby.com